



GMT MONTHLY MEMBERSHIP PROGRESS REPORT

Results as of: 3/31/2018

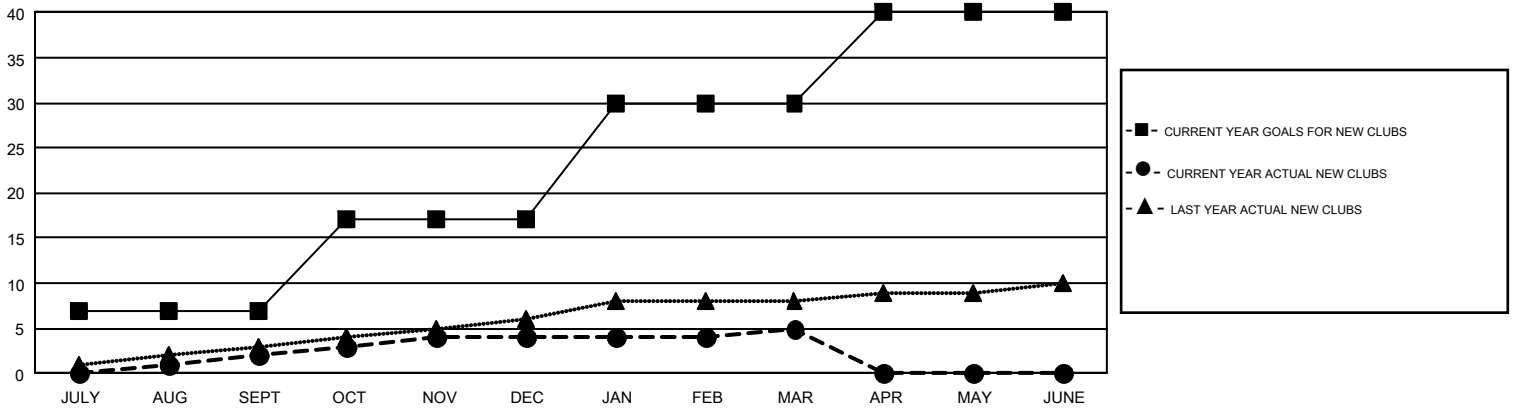
GMT Constitutional Area 1, Group D

GMT: MICHAEL MOLEND A

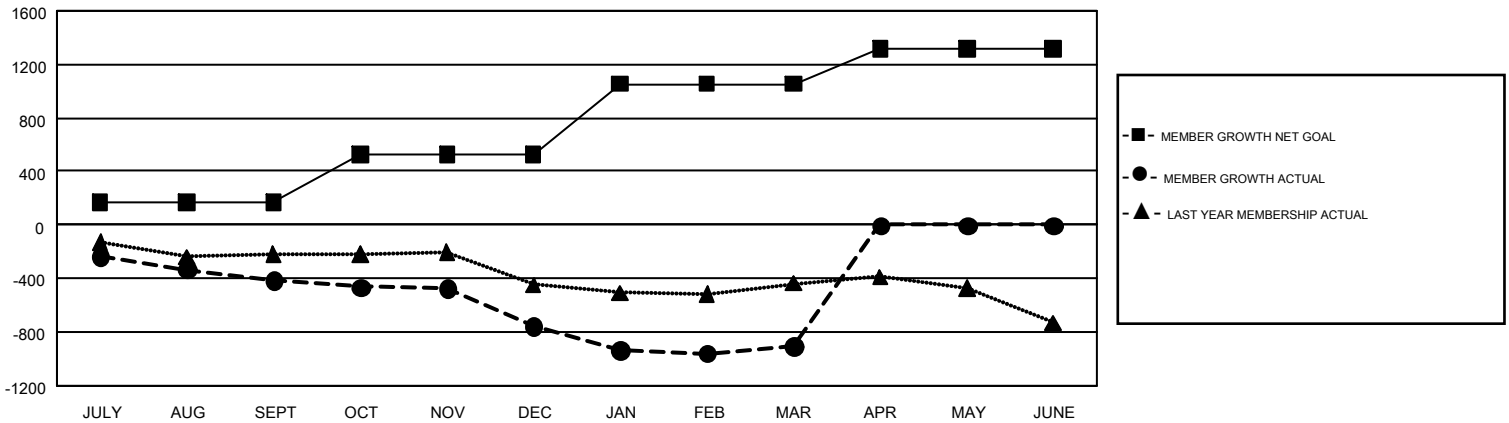
REPORT DOES NOT INCLUDE CLUBS IN UNDISTRICTED AREAS.

Clubs				Members			
RESULTS FOR 2017-2018				RESULTS FOR 2017-2018			
QUARTER	NEW CLUB GOAL	NEW CLUBS	DROPPED CLUBS	QUARTER	MEMBER GROWTH NET GOAL	MEMBER GROWTH ACTUAL	DROPPED MEMBERS ACTUAL (including transfers)
JULY/AUG/SEPT	7	2	5	JULY/AUG/SEPT	169	954	1,243
OCT/NOV/DEC	10	2	12	OCT/NOV/DEC	355	1,040	1,286
JAN/FEB/MAR	13	1	5	JAN/FEB/MAR	528	1,027	1,049
APR/MAY/JUNE	10	0	0	APR/MAY/JUNE	266	0	0

GOALS AND ACTUAL NEW CLUBS CUMULATIVE



GOALS AND ACTUAL MEMBERS CUMULATIVE



DROPPED CLUBS: 22	854 CLUBS OF 1,532 ADDED 1 OR MORE NEW MEMBERS	GENDER DISTRIBUTION MALE 35,526 (74.21%) FEMALE 12,344 (25.79%)
DROPPED MEMBERS DECEASED 494 CLUB CANCELLED 145 OTHER 2,938 <hr/> TOTAL 3,577	CLICK HERE FOR CUMULATIVE MEMBERSHIP DATA	TOTAL FAMILY UNIT MEMBERS 9,310 FAMILY MEMBERS PAYING HALF DUES 4,721